

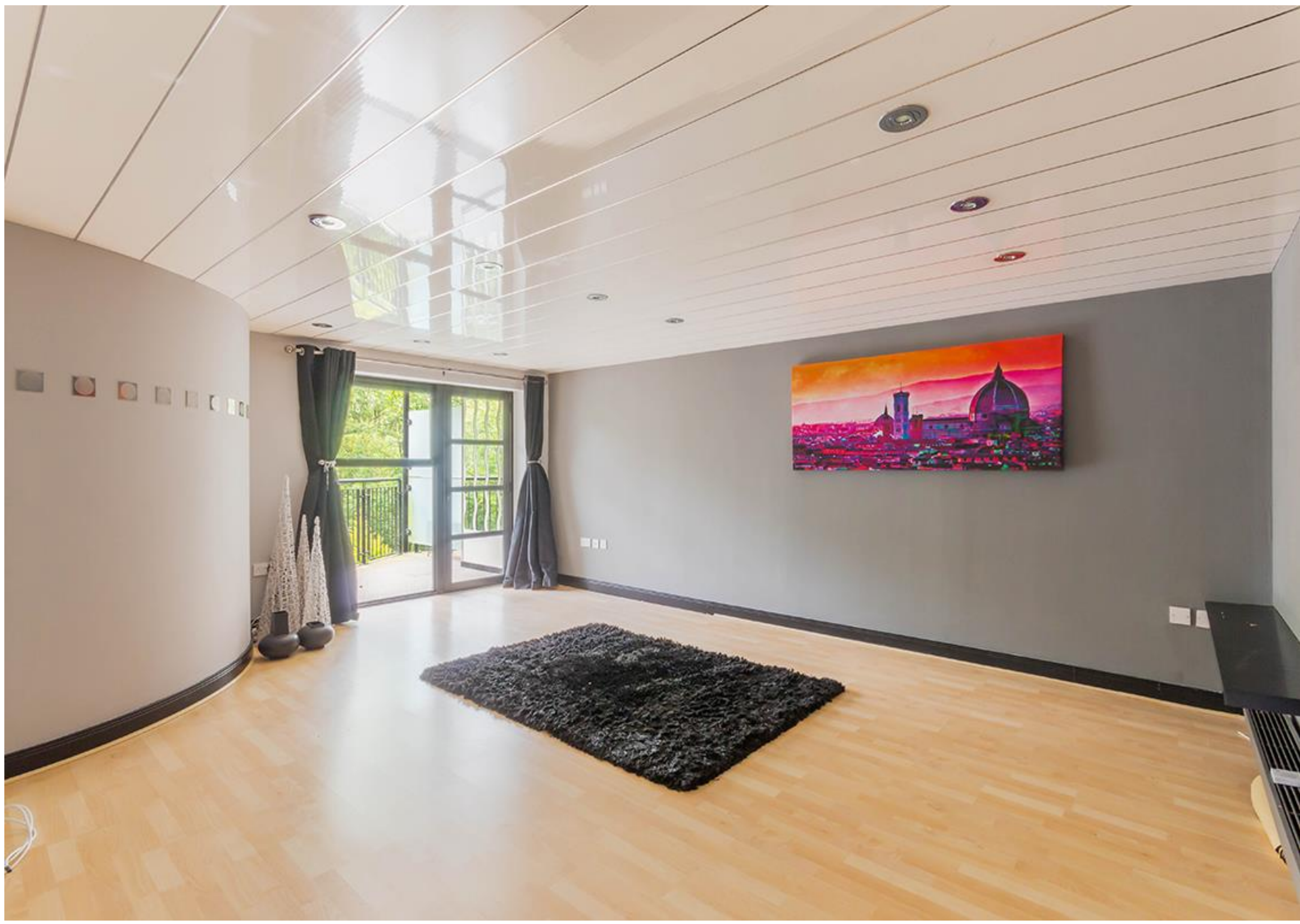


6 Adderstone Court

Adderstone Crescent



SANDERSON
YOUNG





6 Adderstone Court
Adderstone Crescent, NE2 2EA

This highly impressive three bedroom apartment is ideally set to the first floor of this exclusive and prestigious gated development of Adderstone Court, Jesmond.

One of the most sought-after apartment developments within Newcastle, Adderstone Court is located on Adderstone Crescent, which boasts a beautiful and tranquil setting overlooking Jesmond Dene, whilst also being within walking distance of the shops, bars and restaurants of Osborne Road and Acorn Road.

Price Guide:
Offers Over £400,000

3 1 2





Boasting almost 1,100 sq.ft of internal living space, the accommodation briefly comprises: Communal entrance hall with secure entry phone system | Private entrance lobby at the first floor level | Generous central entrance & hallway with two storage cupboards | Impressive 19ft lounge/diner with access to a private balcony overlooking Jesmond Dene.

Kitchen/breakfast room with granite work surfaces and integrated appliances | Principal bedroom with fitted storage and access to an ensuite shower room/WC | Second double bedroom, again with fitted storage | Bedroom three offers a smaller double room | Family bathroom with three piece suite.



Emma Doran
0191 213 0033
emma.doran@sandersonyoung.co.uk



Floorplan to be included



Externally the apartment benefits from an allocated secure private parking space which is positioned in the secure underground car park, along with separate external visitor parking. With landscaped communal gardens and no onward chain, this is a wonderful opportunity not to be missed!

Services: Mains electric, gas, water and drainage | Tenure: Leasehold | Lease Remaining: 974 Years | Service Charge: £3,137.08 per annum | Council Tax: Band E | Energy Performance Certificate: Rating TBC